



SHOFT SHIPYARD

22.5 M Deep Sea Fishing Vessel

MOST FUEL EFFICIENT

HIGHEST FISH HOLD

QUICK FREEZE FACILITY



DETAILS OF VESSELS

No of Vessels Built	: 03
SSPL Yard Nos.	: 271,275 & 276
Owner	: Beneficiaries of Tamilnadu Fisheries (Under Blue water scheme)
Flag	: India
Year of Delivery	: 2020
Area of Operation	: Unrestricted Service

MAIN PARTICULARS

Length Overall	: 22.55 m
Breadth	: 06.30 m
Depth	: 03.50 m
Draft	: 01.80 m
Speed	: 9 Knots @ 100 %MCR
FO Capacity	: 12,000 Litres
F.W Capacity	: 10,000 Litres
Accommodation	: 6 Men (Including Cooking Area Toilet & Wash room)

NAVIGATIONAL & COMMUNICATION EQUIPMENT

Echo Sounder/Fish Finder	: 1 No
AIS/GPS	
Compass	: 1 No
VHF with DSC	: 1 No

FISH HOLD & FISHING GEAR

Insulated Fish Hold	: 60 m3
Refrigerated SW System	: 5 TR Capacity
Refrigerated SW Tanks	: 2 x 1440 Litres
Gill Net Winch	: 350 Kg Pull
Longline Winch	: 850 Kg Pull
Longline winch drum Cap.	ϕ 5mm x 20,000 m long. Monofilament Wire
Gill Net Storage	: 15 m3

MACHINERY & EQUIPMENT

Propulsion	: Single Screw FPP
Main Engine	: 1 x 180 BHP @2000 Rpm
Gear Box	: Advance 135A
Steering Gear	: Hand Hydraulic
DG Set	: 1 x 20 KVA
Inverter Capacity	: 1 x 2 KVA
Electrical System	: 415V & 230V by DG : 230V Lighting by Inverter
Emergency Supply	: 24V Battery System and Engine Dynamo

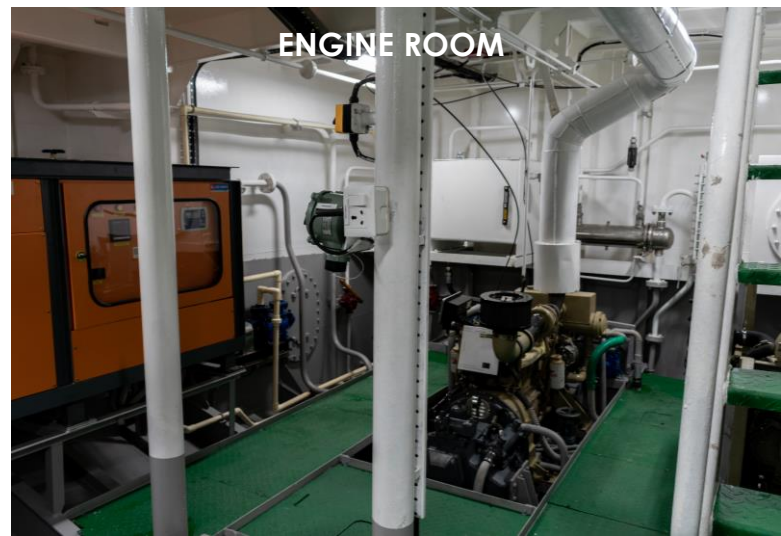
LIFE SAVING EQUIPMENT

Life Buoy	: 02 Nos
Life Jackets	: 10 Nos
Fire Extinguishers	: 02 Nos

22.5 M Deep Sea Fishing Vessel



WHEEL HOUSE



ENGINE ROOM



ACCOMMODATION WITH 6 BUNKS



INSULATED FISH HOLD & RSW TANKS